

# General Improvements with GainSeeker Suite 8.2.1

## Contents [\[Hide\]](#)

[Upgrading to versions 8.2 or 8.2.1](#)

[What's new in GainSeeker version 8.2.1](#)

[Draw charts and view dashboards and desktops with real-time data using your mobile device](#)

[Combine and apply multiple filters to the same data](#)

[Apply an Improvement Start Date and Start Value directly from a DPU chart](#)

[The Button dashboard control: Automatically execute functions using command line parameters](#)

[Normal Probability Plot chart](#)

[View Tables and Paths or Traceability Labels selections for all configurations](#)

[Updated template commands](#)

[GainSeeker version 8.2](#)

[NEW GainSeeker Charts module](#)

[GainSeeker Mobile Device Support for Data Collection](#)

[The GainSeeker Online User Guide](#)

[What's new in the Dynamic Reports module](#)

[Other Improvements](#)

## Upgrading to versions 8.2 or 8.2.1

The GainSeeker Installation and upgrading instructions for the System Requirements have been changed to reflect this information :

[The Microsoft .Net Framework](#) version 2.0 Service Pack 2 is installed on all workstations or on your terminal server. (Installing this version of the .Net Framework will require a computer reboot.) Version 2.0 Service Pack 2 is included in Microsoft .Net Framework versions 3.0 and 3.5. For version 4.0 users, it must be separately installed.

For more information, see [Installing or Upgrading GainSeeker](#).

## What's new in GainSeeker version 8.2.1

### Draw charts and view dashboards and desktops with real-time data using your mobile device

GainSeeker Analyze Mobile App now includes charts, dashboards, and desktops. Available only with GainSeeker Mobile Web Service. Another mobile application—[GainSeeker Collect](#)—was added in version 8.2.0. Contact the [Hertzier Sales Department](#) for more information.



### Combine and apply multiple filters to the same data

Now you can apply multiple filters to the same data using the **Combine** filters feature. If you usually work with several filter combinations, this helps limit the number of filters you need to create while keeping your list of saved filters short. See [Setting the filter](#)

### Apply an Improvement Start Date and Start Value directly from a DPU chart

From an open DPU chart, you can quickly apply an improvement start date and start value that you have defined for any process to some retrievals. See [Select DPU start date and value](#)

### The Button dashboard control: Automatically execute functions using command line parameters

Optionally use command line parameters to have GainSeeker perform automatic functions when the [Button dashboard control](#) is clicked. You can choose to run a file, template, or planned or stored session. See [Selecting the ClickAction property](#).

### Normal Probability Plot chart

The **Normal Probability Plot** chart helps you quickly recognize potentially non-normal distributions. Data points should plot in a linear pattern that approximates a straight line along the axis of the theoretical normal data distribution. Non-normal situations may be indicated by data trending away from the line.

The data in the following example curves upward from under the line and continues in that trend, suggesting greater-than-normal variance.



⌘ For more examples, see [Normal Probability Plot charts](#)

### View Tables and Paths or Traceability Labels selections for all configurations

The **View as Text** right-click menu option for a configuration now allows you to view the **Tables and Paths** or **Traceability Labels** selections for all your configurations in addition to those selections for the selected configuration. See [View Tables and Paths or Traceability Labels options](#) for more information.

### Updated template commands

- ⌘ Updated SETCELL commands allow you to change SPC Data Entry functions while the template is running. You can [change the input mode](#), [change the formula](#), and change the [user message](#) that displays at the top of the tab page.
- ⌘ Updated TRACE\_OPT commands allow you to [configure a traceability column so the cell value must come from a predefined list](#) and [configure a traceability column to require entry of a value](#).
- ⌘ Now you can replace the "PROCESS" parameter with a list of defects in the [DMS\\_COUNTS](#) command.

- ⌘ New [EXCELCOM\\_SAVEAS](#) command saves an Excel file to a new format. Currently, the only format option is HTML.
- ⌘ Updated [TIMER\\_DELAY](#) command halts the data entry session and waits for the timer to expire before it allows the session to resume. You can allow users to view the timer countdown, pause and resume the timer, cancel or run immediately, and reset the timer.
- ⌘ New [CLOSE0](#) command closes the RS232 input buffer for COM port *n*.
- ⌘ Updated [DE\\_OPT](#) parameter (DE\_OPT 32) turns on and turns off the Ctrl-K function, which allows the Data Entry template user to switch from RS232 mode to keyboard mode without any modifications to the template.
- ⌘ Updated [DE\\_OPT](#) parameter (DE\_OPT 34) turns on or turns off the **Save Changes** dialog box.
- ⌘ Updated [MISC\\_INFO](#) commands (MISC\_INFO 10), (MISC\_INFO 11) return the number of the current configuration and the name of the current configuration, respectively.
- ⌘ New [date format](#) parameter option of the DATE\_PICK command formats the return value according the short date and time format in a workstation's regional options.
- ⌘ New [EXCELCOM\\_SHEET](#) command changes the active sheet (the sheet on top) in a Microsoft Excel file. If you switch to Sheet 2, for example, all changes you write will apply to Sheet 2 until you change to another sheet.
- ⌘ Updated [PATH](#) command returns many new options.
- ⌘ Updated [CHOOSE3](#) command allows you to center the dialog box on the data entry screen. If there is no text label on any of the three buttons on the dialog box, the button will not display.
- ⌘ Updated [TRACE\\_MR](#) command indicates the number of the traceability field that should be searched for the specified text.

**Please note: Hertzler Systems is phasing out some GainSeeker modules**

The GainSeeker Charts  module and the Dynamic Reports module can now be used in place of these modules:


- ⌘ DMS Charts and Reports
- ⌘ SPC Charts and Reports
- ⌘ Enterprise Dashboard

Beginning with GainSeeker version 8.2, these modules are referred to as the LEGACY Charts and Dashboard modules. The LEGACY modules are still available with version 8.2.1 for alternate use.

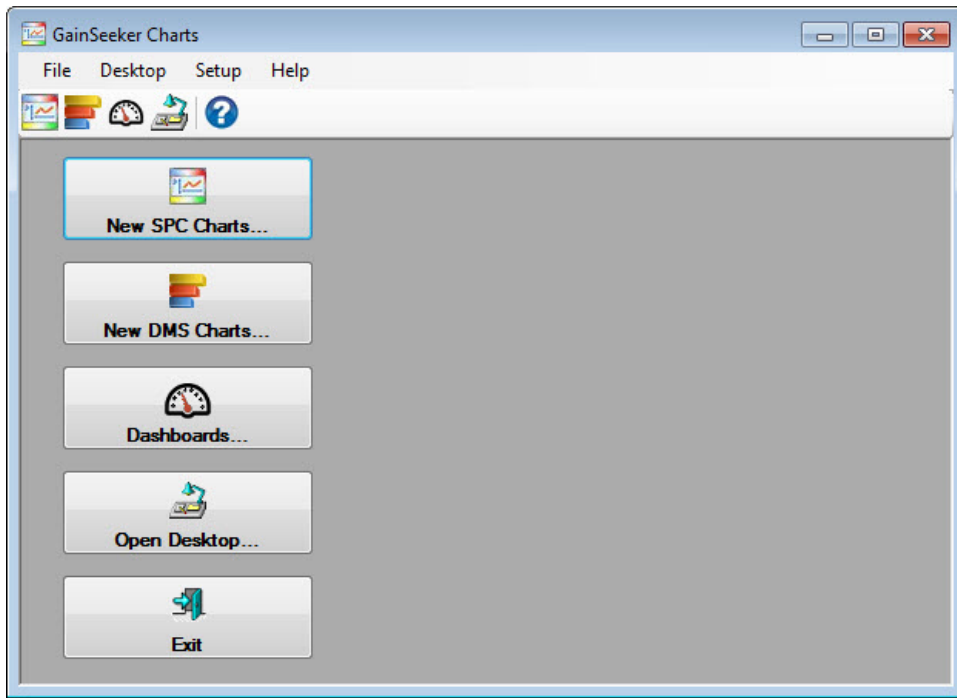
## GainSeeker version 8.2

### NEW GainSeeker Charts module

#### Visually engaging, interactive—and expanded options for analyzing and reporting data

The GainSeeker Charts  module partners with the [Dynamic Reports](#) module in Version 8.2.0 to offer even more options for analyzing and reporting data.

The [GainSeeker Charts window](#) serves as the backdrop for all your analysis. It offers advanced tools for creating SPC charts, DMS charts, and interactive dashboards—all which can now be stored together as a retrievable [Desktop](#)



### Thirteen new Dashboard Controls offer versatile design and function to dashboards

- and [Adding dashboard controls](#) to the dashboard window
- See [Shadowing the Pros in Dashboard Design](#) to learn how to design interactive dashboard that perform.

### The Overpack Wizard

**Enter Data**  
Click the button control for each line to open a data entry template

**View Charts**  
Click the button control to view charts or desktops that display the most recent data for that standard

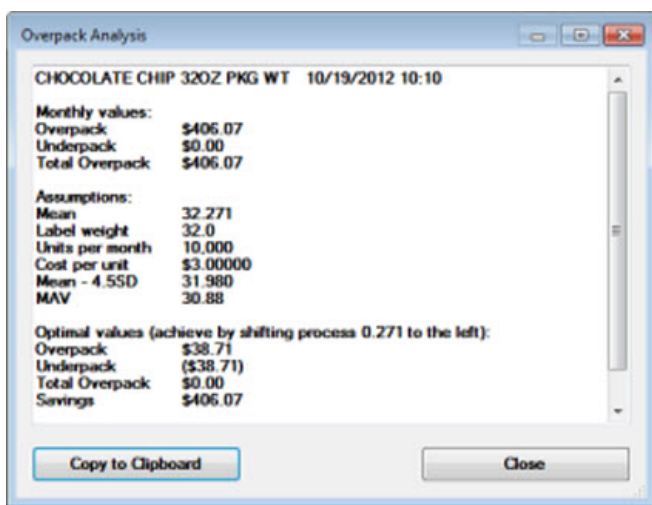
**DateTime** control displaying date/time of most recent data collection. It can display other date/time options, including time of last dashboard refresh.

**DateTime** control displaying optional red alert indicating that scheduled data collection for Line #2 is overdue. It can also be set with a warning time alert color and a filter you set for the standard.

**DateTime** control displaying optional orange alert. The control has been set to change to orange when there is no recent data available within a set time period. In this scenario, Line #3 is not running.

Primarily used by foods industry companies whose products need to minimally meet the stated package label weight, the **Overpack Wizard** can be also used for other applications, such as paint coat thickness. A shift in process or reduction in variation could save you a substantial amount of money over time.

See [Reducing Overpack in your processes](#)




### GainSeeker Mobile Device Support for Data Collection

Now you can collect inspection data using mobile devices such as an iPad tablet, Android tablet, or Android phone. Take photos of defects on the spot, work online or offline, add comments, and more. Contact the [Hertzier Sales Department](#) for more information about GainSeeker Mobile

Collect.



### Import your GainSeeker Versions 8.1 and earlier dashboards to the GainSeeker Charts module

Dashboards from the Enterprise Dashboard module (version 8.1 and earlier) can be easily imported to the GainSeeker Charts  module.

↳ See [Using the Load v8.1 button](#)

### Performance Charts

The new **Performance** chart helps define process capability by grouping data by a traceability value using a Box and Whisker format. This allows for quick visual comparison of data groups by mean and variation.

↳ See [Performance Charts](#)

### Data Brushing on charts

Data brushing is a simple technique that allows you to select data points on a chart, then choose from options that allow you to focus only on that data or to exclude it from a retrieval.

↳ See [Brushing Chart data](#)

### Command Line options enable automatic task execution

You can create a shortcut to have GainSeeker automatically open Desktops, Charts, or Dashboards. You can also opt to have GainSeeker then execute tasks for these items, such as printing, exporting, and closing items.

↳ See [Parameters to open GainSeeker Charts](#)

### Send charts and data values to PowerPoint or Word

Sending an image of a chart to Microsoft® PowerPoint or Word is a quick and simple process. You can also send data values for tables and statistics lists.

↳ See [Sending charts to PowerPoint](#)

### The GainSeeker Online User Guide

#### Navigate with ease following these guidelines

You can use the **Contents** tab (**Fig. 1**) on the *Online User Guide for GainSeeker* to locate topics that apply to the module in which you are working.



This is important because the instructions for performing a specific task ("create SPC charts," for example) may differ between the GainSeeker Charts module and the [LEGACY Charts and Dashboard modules](#), even though these modules have many topics in common.

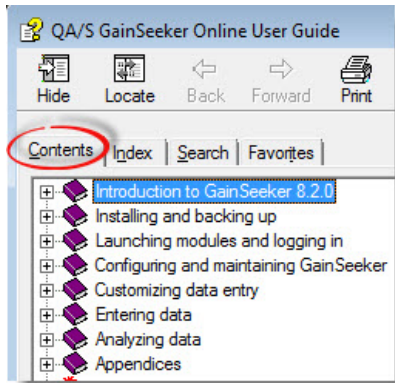



Fig. 1

To locate LEGACY modules topics and the NEW GainSeeker Charts module topics:

- 2. With the **QA/S GainSeeker Online User Guide** open, click the  symbol preceding **Analyzing data** on the **Contents** tab to expand the tree and display the options. (See [Navigating Tree structures](#) for help with using tree structures like the one featured here.)

The NEW GainSeeker Charts module and Dynamic Reports module topics and the **LEGACY Charts and Dashboards** modules topics are located on the **Contents** tab as shown in the following diagram (**Fig. 2**).

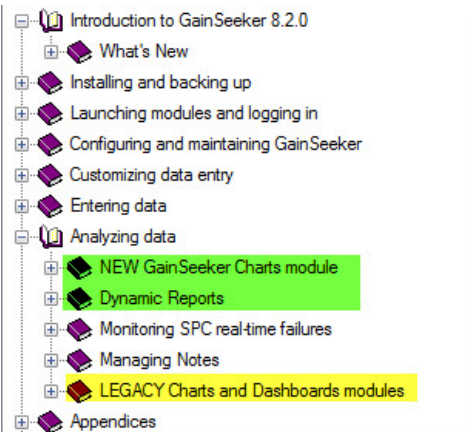



Fig. 2

- 2. Click the  symbol preceding the module in which you want to work to expand to that node and display the available options (**Fig. 3**).

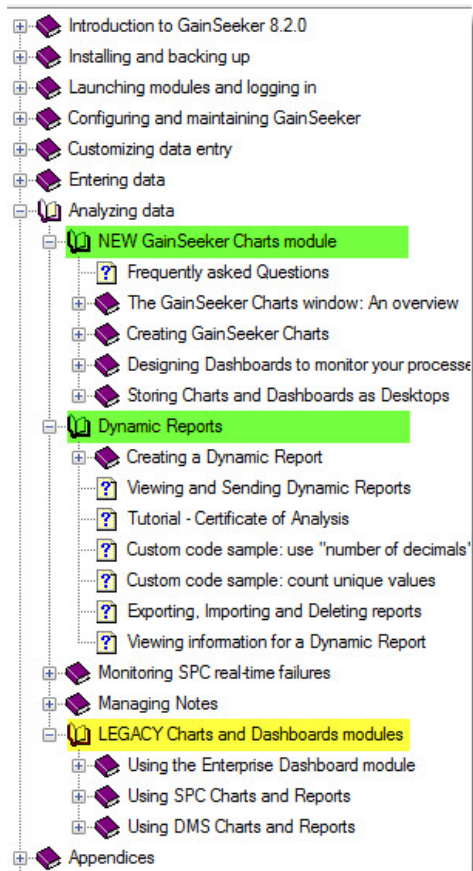


Fig. 3

## What's new in the Dynamic Reports module

- See [Dynamic Reports](#) to learn more about creating Dynamic reports.

### Add charts to a Dynamic report

Use the new **Charts** tabs on the **SPC (or DMS) Report Retrieval Settings** dialog boxes to choose the types of charts to generate for a Dynamic report. The charts will draw for each part number you select for the report.

- See [SPC Charts tab](#) and [DMS Charts tab](#)

### Automatic prompt for change in part number, date range, or filter before viewing reports

You can opt to have GainSeeker prompt you for changes in part number, date range, and/or filter before you view saved reports.

- See [Prompt before viewing](#)

### AutoRefresh Report property implemented

The **AutoRefresh** property is now implemented, which allows refreshing of data for a report that is open in view mode.

## Other Improvements

### Tools for template version control

Tools for version control were added to the SPC Designer module that allow you to see what changes were made between versions of a template. A Best Practice checklist was also added for version control.

- See [Tools Menu](#)

### New Template commands



⌘ [ARRAY\\_OPT](#) command clears all values in the given MySArr array or MyNArr array.

⌘ [LIST\\_Q](#) array command now displays the contents of a MySArr array from which you can select.

#### Now you can group DPU chart data by the hour, day, week, month, or quarter

⌘ See [Choosing DPU chart options](#)

#### New "Percent (%) Above Range Gate" and "Count Above Range Gate" included in new statistics

GainSeeker can now perform calculations for the following statistics:

CountBelowRangeGate  
CountInsideRangeGate  
CountOutsideRangeGate  
BelowRangeGatePct  
BelowUpperRangeGatePct  
AboveLowerRangeGatePct  
InsideRangeGatePct  
OutsideRangeGatePct

⌘ See [SPC Statistics available](#) for more information

#### Display control limits on DMS Yield charts

You can now opt to display control limit lines on DMS yield charts in the GainSeeker Charts  module.